

How-To Use JupyterHub as Exercise Platform

Peter von Rohr

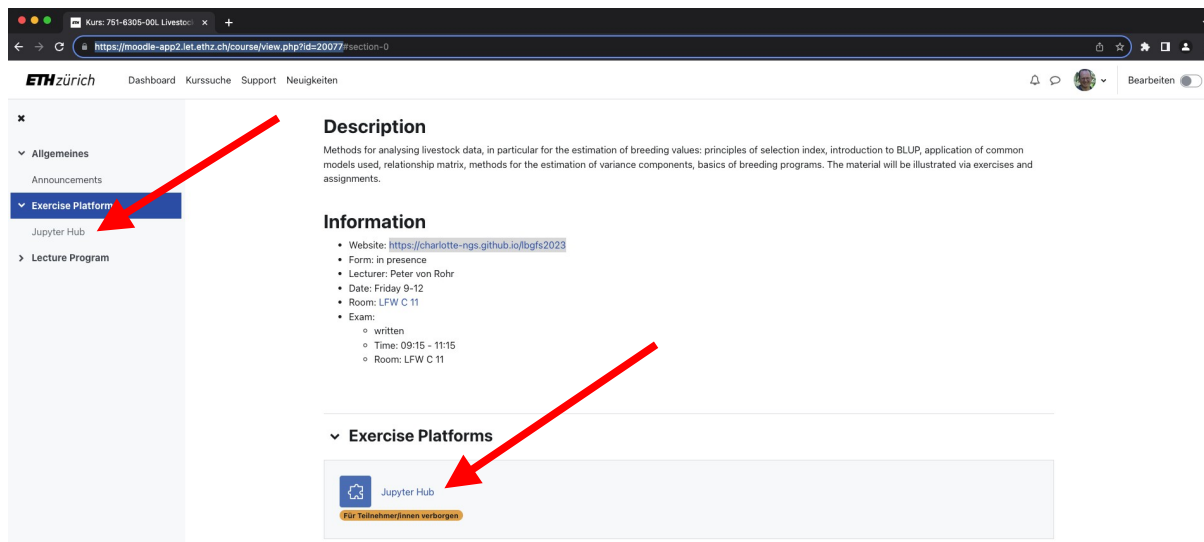
2023-09-21

Background

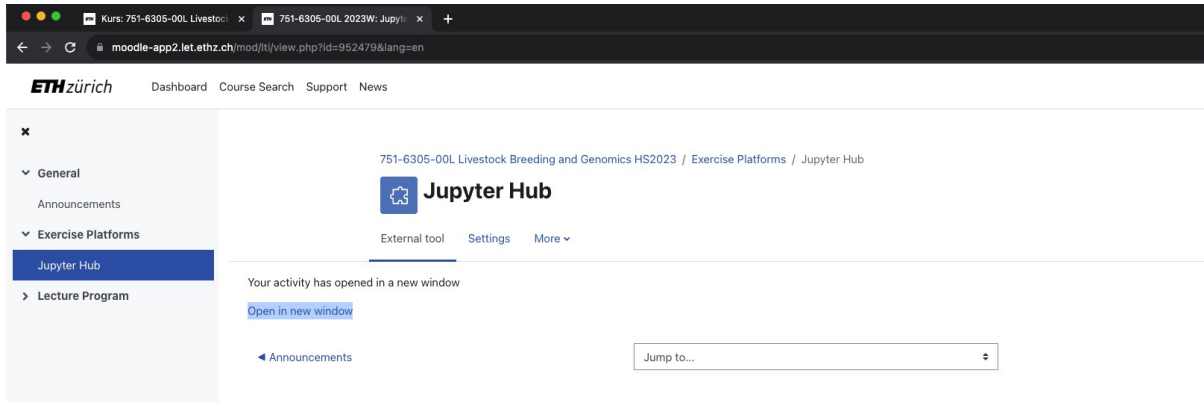
JupyterHub is provided by LET as a possible exercise platform.

Availability

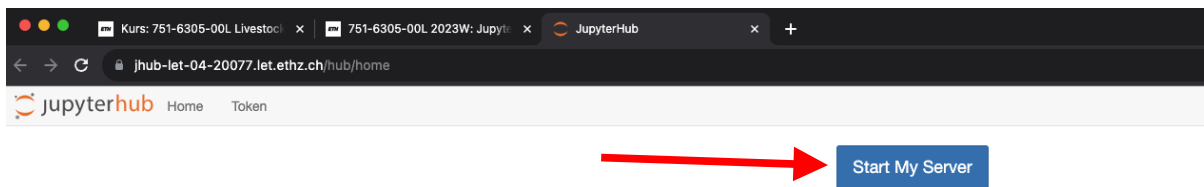
JupyterHub can be accessed from the moodle course page at: <https://moodle-app2.let.ethz.ch/course/view.php?id=20077>. Either use the link in the section **Exercise Platform** or use the navigation bar on the left of the page, as shown below.



On the JupyterHub page click on **Open in new window** which opens the JupyterHub start page

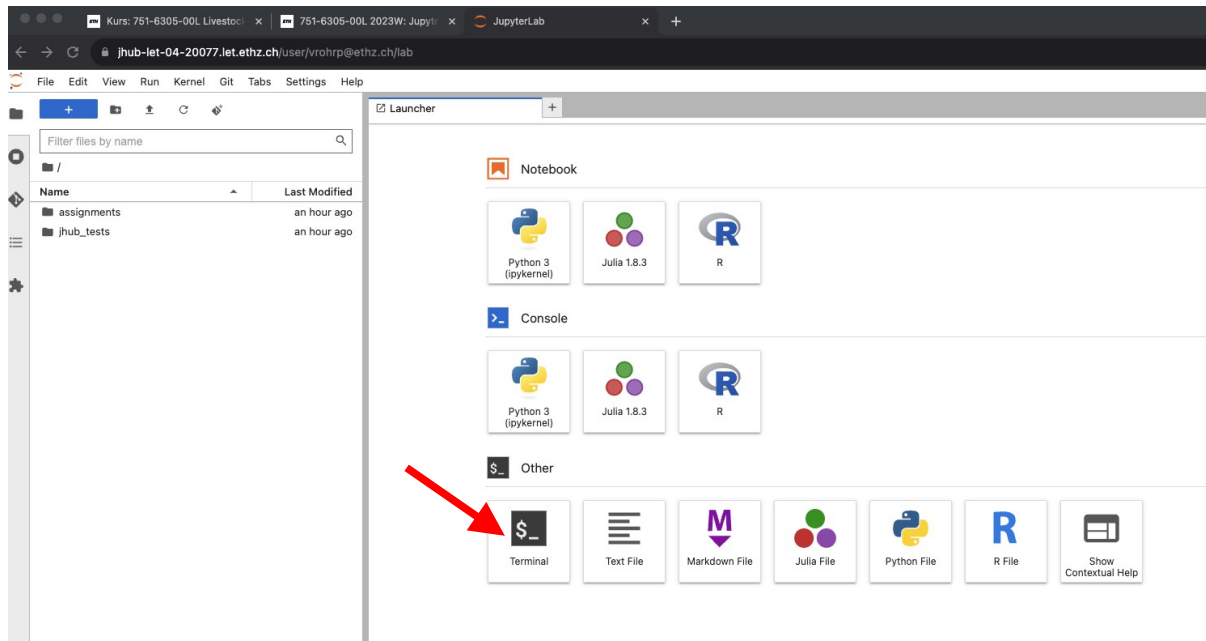


On the JupyterHub start page click on **Start My Server**



Initial Download of Exercise Repository

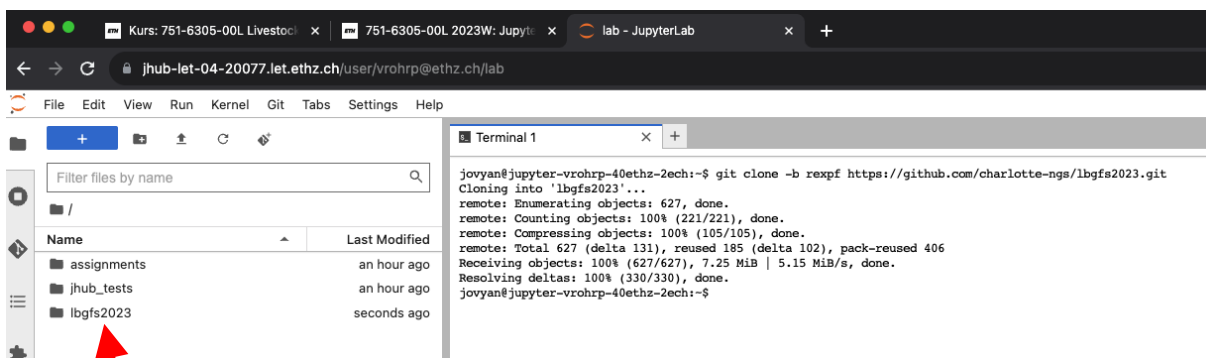
When starting the JupyterHub the first time, we have to download the exercise files. This is done from the terminal. To do that click on the **Terminal** symbol on the Launcher.



Once the terminal is started enter the following command

```
git clone -b rexp https://github.com/charlotte-ngs/lbgfs2023.git
```

The output is shown in the screen-shot below. Then you will have an additional subdirectory called **lbgfs2023**.



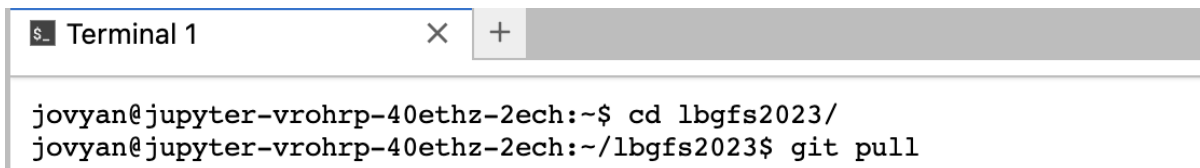
New directory with exercises

Updating Directory lbgfs2023

Once, the first version of the repository is cloned from Github. The any new material has to be fetched by updating the repository. This can be done with

```
cd lbgfs2023  
git pull
```

In the terminal this looks as follows:



```
Terminal 1 × +  
jovyan@jupyter-vrohrp-40ethz-2ech:~$ cd lbgfs2023/  
jovyan@jupyter-vrohrp-40ethz-2ech:~/lbgfs2023$ git pull
```